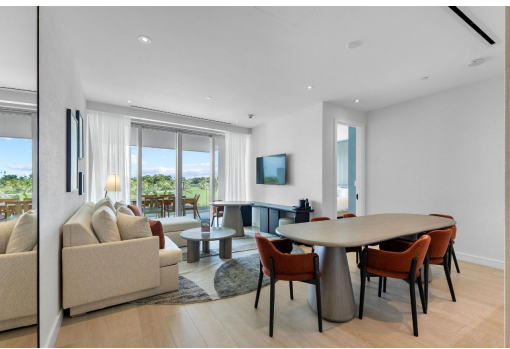


# Condo in West Bay Street



## Condo in New Providence/Paradise Island

Turn-key golf course facing 2 bedroom condo located on the second floor of the condo-hotel side of Goldwynn. Ownership on the condo-hotel side allows owners to enjoy as a vacation home for a portion of the year while generating rental income the remainder of the year. Condo is fully managed by Goldwynn. Amenities include, in-room dining and laundry services, concierge and valet, seaside restaurant, coffee, beach bar and sundry stores all available on site. The Residences at Goldwynn are an ivory and glass celebration of relaxation and architectural beauty. The interior layout is well executed where spaces naturally flow from one to another and features the finest in finishes. Benefit from being nearby to the mega resort Baha Mar, its casino and amenities....read more on our website.

Bedrooms: 2  
Bathrooms: 2  
Lot Size: 348480  
Living Area: 1306  
Subdivision: West Bay Street  
Features: Swimming Pool, Kitchen Built-in(s), Main Level Entry, Stand-by Generator, 24 Hour Security, Night Security, Furnished, Hurricane Windows



James Sarles

Phone: (242) 351-9081  
info@sarlesrealty.com



**\$1.250,000 ID# 50018** [View Online](#)  
[www.sarlesrealty.com](http://www.sarlesrealty.com)