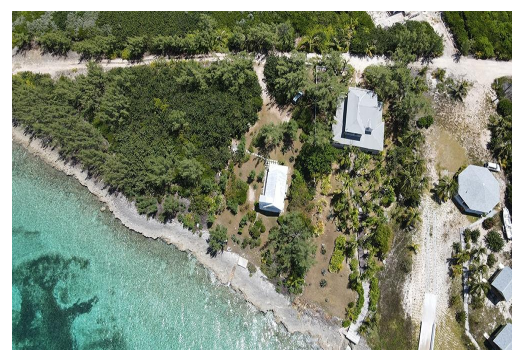


Single Family Home in Whale Point



Single Family Home in Eleuthera

This charming Bahamian Seaside Cottage overlooks the historic Harbour's Mouth channel and the famous Pink Sand Beach of Harbour Island, a land where Pirates once ruled. This idyllic home features 360 degree views, 2 bedrooms, 1.5 baths and an outdoor shower, situate on a bay filled with starfish and rays. The idyllic pristine private beach is a short walk away. The Boat House has excellent fishing right from the property's steps to the Bay, central air and wireless internet. Harbour Island's restaurants and entertainment are just 5 minutes away by boat, 25 Minutes by land/ferry. The beauty of this home is its remote, but not distant, location, uniquely situated at the end of the scenic Whale Point Narrows on the northeast tip of the Island of Eleuthera, moon and stars glow by evening and...read more on our website.

Bedrooms: 2
Bathrooms: 2
Lot Size: 20000
Living Area: 1000
Subdivision: Whale Point
Features: Garden Area,
Furnished



James Sarles

Phone: (242) 351-9081

info@sarlesrealty.com



\$950,000 ID# 50153 [View Online](#)
www.sarlesrealty.com