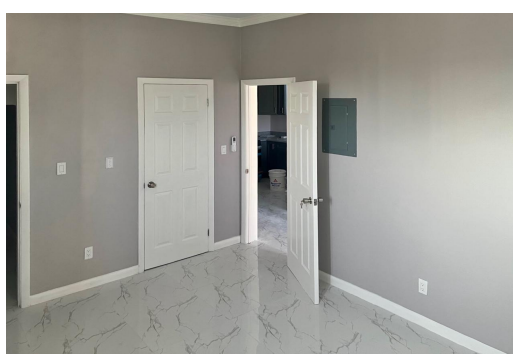
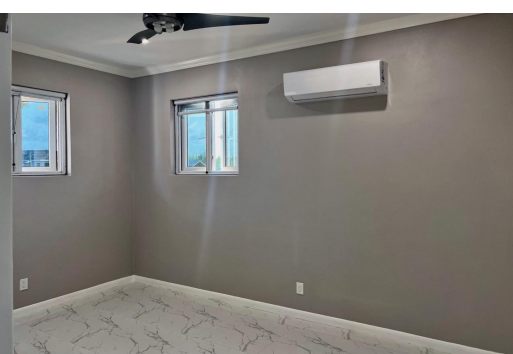


# Full Duplex in Coral Harbour



## Full Duplex in New Providence/Paradise Island

The quiet corner of Kent Drive in Coral Harbour is one of Western New Providence's finest. This newly built one bedroom, one bathroom unit is well appointed with brand new stainless steel appliances, spacious everything including walk in closets, large bathrooms and all the right touches. A landscaped yard, private gate and parking add even more value but the real value driver is electricity and water are all included in the monthly rental price. Schedule a viewing ASAP!...read more on our website.

Bedrooms: 1  
Bathrooms: 1  
Lot Size: 556  
Living Area: 556  
Subdivision: Coral Harbour  
Features: Fully Fenced,  
Impact Windows,  
Appliances Only



James Sarles

Phone: (242) 351-9081

info@sarlesrealty.com



**\$1.700 () ID# 50776** [View Online](#)  
**[www.sarlesrealty.com](http://www.sarlesrealty.com)**