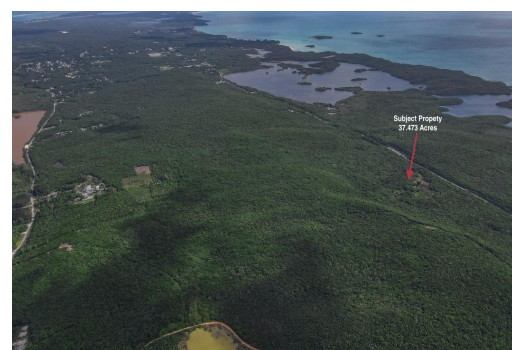
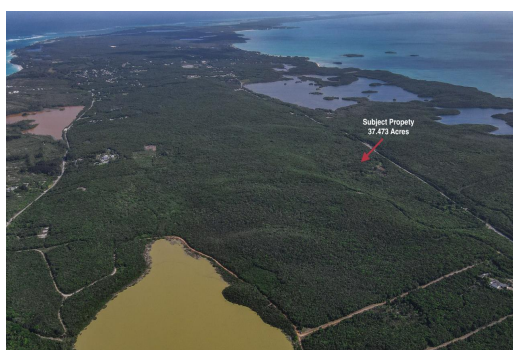


# Lots/Acreage in Palmetto Point



## Lots/Acreage in Eleuthera

Discover your own slice of paradise on this sprawling 37.473-acre acreage nestled in the picturesque Great Oyster Pond settlement on the stunning island of Eleuthera. This expansive property offers a rare opportunity to create your dream oasis in a tropical paradise. Just a short drive away from the tranquil beaches, you can enjoy the soothing sound of the waves and the soft, powdery sand whenever you desire. With convenient highway access, you have the freedom to explore all that Eleuthera has to offer, from its pristine beaches to lush landscapes, all from the comfort of your future dream home. Whether you envision building your private estate, a vacation retreat, or a development project, this versatile acreage is a canvas for your imagination and a gateway to the island's natural beaut...read more on our website.

Bedrooms: 0  
Bathrooms: 0  
Lot Size: 1632324  
Living Area: 1632324  
Subdivision: Palmetto Point  
Features: None



James Sarles

Phone: (242) 351-9081

info@sarlesrealty.com



**\$3.750,000 ID# 50976** [View Online](#)  
**[www.sarlesrealty.com](http://www.sarlesrealty.com)**