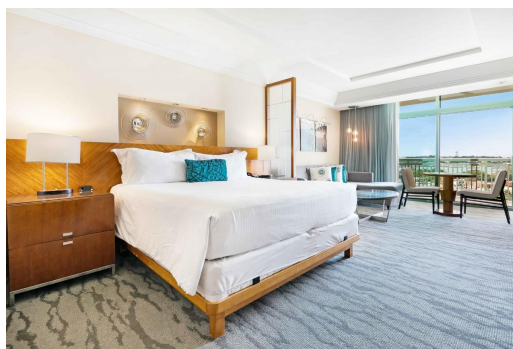


Condo in Paradise Island



Condo in New Providence/Paradise Island

Situated on the eighth floor at The Reef at Atlantis, unit 8901 is a beautiful studio suite encompassing 523 sq. ft. with views overlooking the beach and Nassau Harbour. Owners have exclusive access to their own private gym, Starbucks Cafe conveniently located in the lobby, an owner's concierge team, Aquaventure, Mandara Spa, Cain Pool and Beach Club, an array of restaurants, Casino, Dolphin Cay and much more. The studio suites are the most sought out units at The Reef due to their high return on investment....read more on our website.

Bedrooms: 1
Bathrooms: 1
Lot Size: 523
Living Area: 523
Subdivision: Paradise Island
Features: Swimming Pool, Main Level Entry, Stand-by Generator, 24 Hour Security, Furnished



James Sarles

Phone: (242) 351-9081
info@sarlesrealty.com



\$425,000 ID# 51394 [View Online](#)
www.sarlesrealty.com