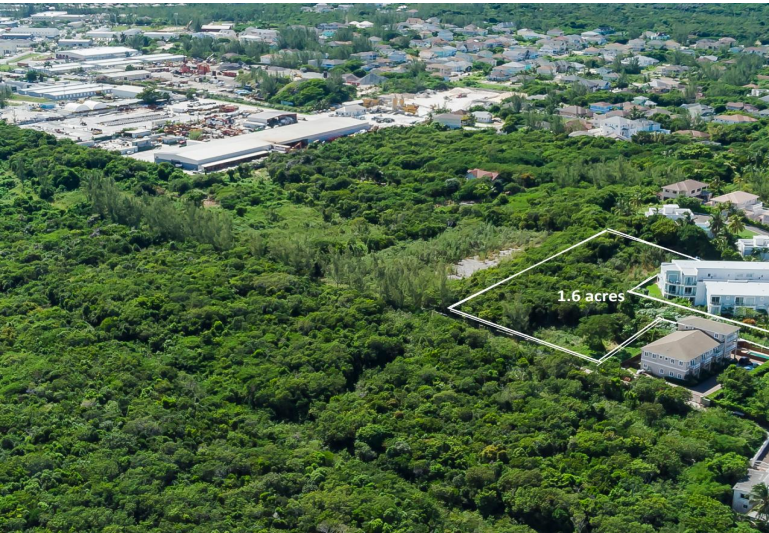


# Lots/Acreage in West Bay Street



## Lots/Acreage in New Providence/Paradise Island

This 1.6-acre plot of land is perfectly situated just off West Bay Street, in close proximity to Solemar, Miramar West Condos and the stunning beach. Ideal for savvy developers, this lot offers immense potential to create upscale condominiums in an area highly sought after by discerning buyers. Additionally, an adjacent 3-acres of land available, allowing for the possibility of an even more remarkable development. Don't miss out on this chance to capitalize on a remarkable location.....read more on our website.

Bedrooms: 0  
Bathrooms: 0  
Lot Size: 68477  
Living Area: 68477  
Subdivision: West Bay Street  
Features: None



James Sarles

Phone: (242) 351-9081

info@sarlesrealty.com



**\$1,400,000 ID# 51478** [View Online](#)  
[www.sarlesrealty.com](http://www.sarlesrealty.com)