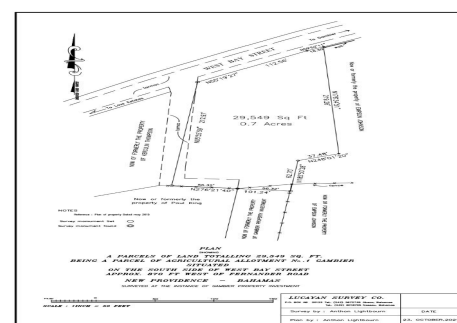
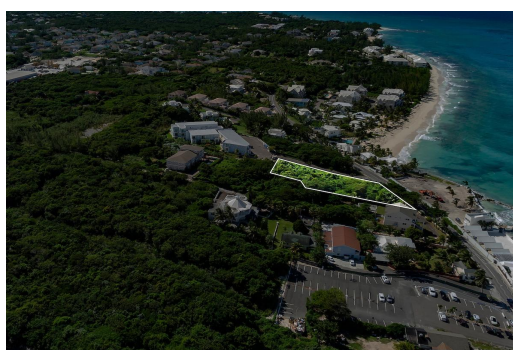


# Lots/Acreage in West Bay Street



## Lots/Acreage in New Providence/Paradise Island

This 29,549 sqft parcel of land is perfectly situated on West Bay Street, in close proximity to Solemar Restaurant, adjacent to Miramar West Condos and the stunning beach. Ideal for savvy developers, this lot offers immense potential to create upscale condominiums in an area highly sought after by discerning buyers. Additionally, an adjacent 4-acre lot is available, allowing for the possibility of an even more remarkable development. Don't miss out on this chance to capitalize on a remarkable location.....read more on our website.

Bedrooms: 0  
Bathrooms: 0  
Lot Size: 29549  
Living Area: 29549  
Subdivision: West Bay Street  
Features: Fully Fenced



James Sarles

Phone: (242) 351-9081  
info@sarlesrealty.com



**\$875,000 ID# 51481** [View Online](#)  
[www.sarlesrealty.com](http://www.sarlesrealty.com)