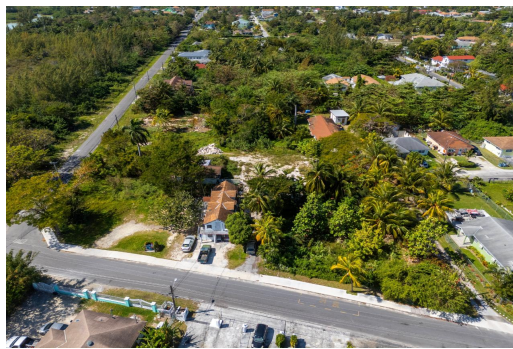


Lots/Acreage in Yamacraw



Lots/Acreage in New Providence/Paradise Island

Multifamily Residential Parcel + Commercial Lot - This listing combines a 1.4 acre multi family parcel (MLS #56441/#56442) and a one acre commercially zoned lot (MLS #56443/#56450). By purchasing both the residential and commercial lots the savvy investor gets the best deal! Located mere feet away from the entrance to the Legendary Blue Water Cay marina development, this area has massive potential. This new project is huge, a massive boon for the East in general and this area in particular. The whole area is going to appreciate in value due to the ongoing project. There are literally endless opportunities for development and the opportunity to multiply your investment with this residential/commercial combo....read more on our website.

Bedrooms: 0
Bathrooms: 0
Lot Size: 107701
Living Area: 107701
Subdivision: Yamacraw
Features: None



James Sarles

Phone: (242) 351-9081

info@sarlesrealty.com



\$700,000 ID# 52160 [View Online](#)
www.sarlesrealty.com