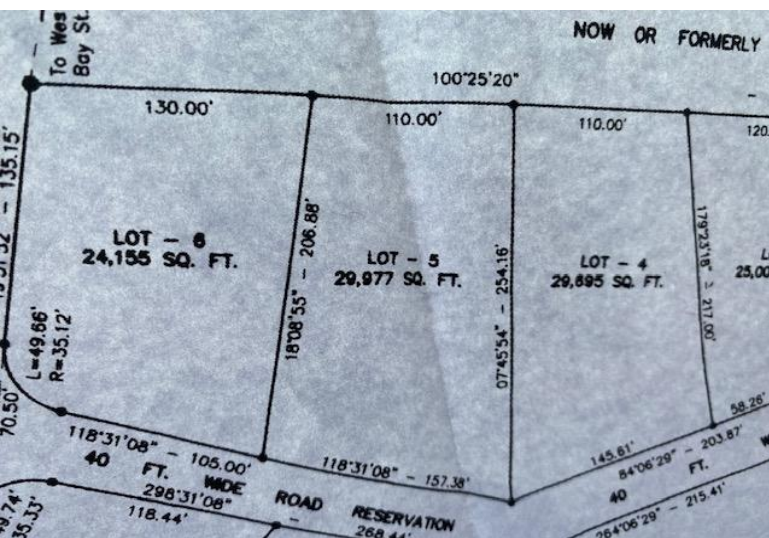


Lots/Acreage in Westridge



Lots/Acreage in New Providence/Paradise Island

Here's a WHOPPER of a multi family lot with elevations boasting ocean views if you look to the north and lake views when you look to the right! The large multi-family property will hold between 10-12 units of investment bliss for you. It is in the upper income highly coveted millionaire Westridge neighborhood in a unique gated area called Westplace II. Just drive past the lot and you'll find beautiful condominium/townhouse buildings as inspiration (2 neighboring property photos are in the listing). The area is near super markets, shopping, Cable Beach and the airport. Walking Directions: Just past the gated entrance to Westplace II, this large gem is the second property on the left. Build your own condominium development, can you imagine your own 10 or 12 units, just the way you design the...read more on our website.

Bedrooms: 0
Bathrooms: 0
Lot Size: 29977
Living Area: 29977
Subdivision: Westridge
Features: None



James Sarles

Phone: (242) 351-9081
info@sarlesrealty.com



\$535,000 ID# 52163 [View Online](#)
www.sarlesrealty.com