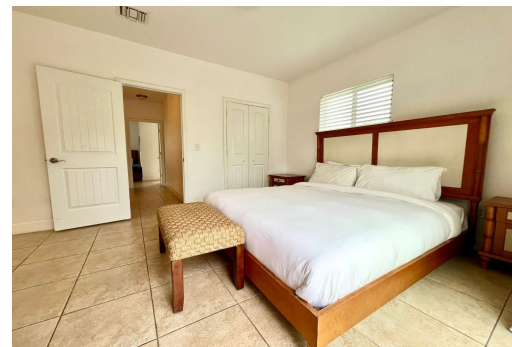
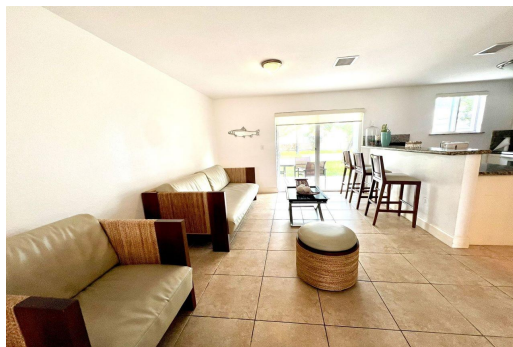


Condo in North Bimini



Condo in Bimini

This 2-bedroom 3-bathroom Millennium II model home consists of 1,766 sq ft. This unit allows for accessibility to the beach and a short walk to the Resorts World Casino. The floor plan of this unit allows for a living room, dining room, full kitchen with granite countertops and full bathroom all to be located on the first floor. Summers Breeze includes contemporary plush neutral earth toned furniture with two seating areas that are perfect for entertaining guests. The stainless-steel kitchen appliances include a microwave, oven, and a coffee maker. A laundry room that is fitted with a stacked washer and dryer. Leading up to the second floor there is a dining room table that seats 8, which is ideal for large families and comradery. The modern wooden staircase ascending to the second floor g...read more on our website.

Bedrooms: 2
Bathrooms: 3
Lot Size: 0
Living Area: 1766
Subdivision: North Bimini
Features: Impact
Windows, Cable,
Furnished



James Sarles

Phone: (242) 351-9081

info@sarlesrealty.com



\$350,000 ID# 52251 [View Online](#)
www.sarlesrealty.com