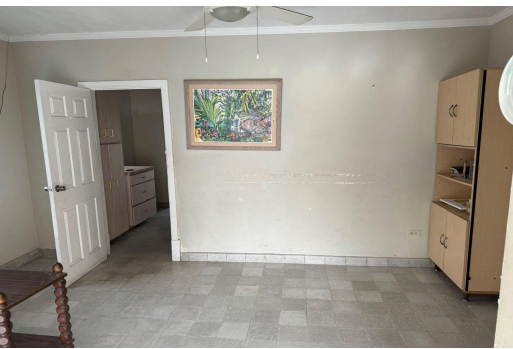


Single Family Home in Harbour Island



Single Family Home in Eleuthera

Step into the realm of endless possibilities with the Higgs House a captivating development project nestled in the heart of Harbour Island. Embrace the boundless potential of this family-owned property, where beauty awaits those with a visionary spirit. With two parcels of land and a prime location just one block from the harbor front, this property spans from Dunmore Street to King Street, encompassing a three-bedroom, two-bathroom house. The expansive 10,093 sq. ft. property comprises the lot that the King Street house sits on at 2,754 sq. ft. and another 7,339 sq. ft. lot on Dunmore Street. The property is surrounded by an array of amenities, including restaurants, shops, and the renowned Pink Sands beach just a short stroll away. Higgs House offers endless development possibilities, wh...read more on our website.

Bedrooms: 3
Bathrooms: 2
Lot Size: 10093
Living Area: 1204
Subdivision: Harbour
Island
Features: None



James Sarles

Phone: (242) 351-9081

info@sarlesrealty.com



\$2,200,000 ID# 52320 [View Online](#)
www.sarlesrealty.com