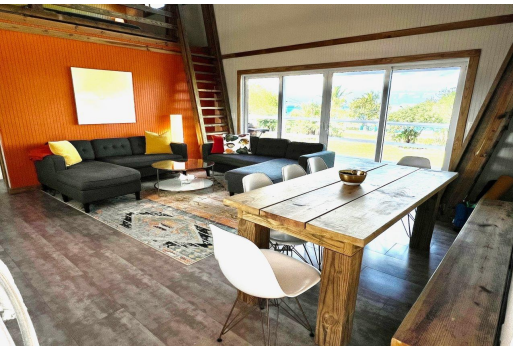


# Single Family Home in South Bimini



## Single Family Home in Bimini

Accessible with ease, Permanent Vacation is a haven waiting to be explored. A quick 30-minute seaplane journey from Miami or a slightly longer one from Fort Lauderdale transports you to this slice of paradise. Situated on a generous 75x100 sqft lot, Permanent Vacation stands as a fully furnished haven, boasting 2 bedrooms, 2 baths, and an additional 2 lofts to accommodate your every need. The interior of this charming abode spans 1200 sqft and is adorned with vibrant colors that infuse character into every corner. The house features modern amenities, including a stackable washer and dryer, a cozy dining area, and a welcoming living room. There is an expansive deck and patio area, where you can relish the cool Bimini evening breeze while unwinding from the day's adventures. The Permanent Va...read more on our website.

Bedrooms: 2  
Bathrooms: 2  
Lot Size: 7500  
Living Area: 1200  
Subdivision: South Bimini  
Features: Additional  
Accom., Main Level Entry,  
Impact Windows, Cable,  
Furnished



James Sarles

Phone: (242) 351-9081

info@sarlesrealty.com



**\$525,000 ID# 52446** [View Online](#)  
[www.sarlesrealty.com](http://www.sarlesrealty.com)