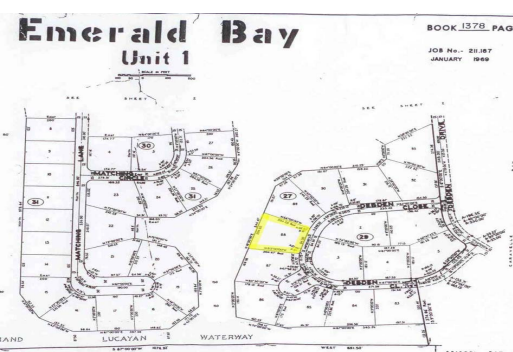
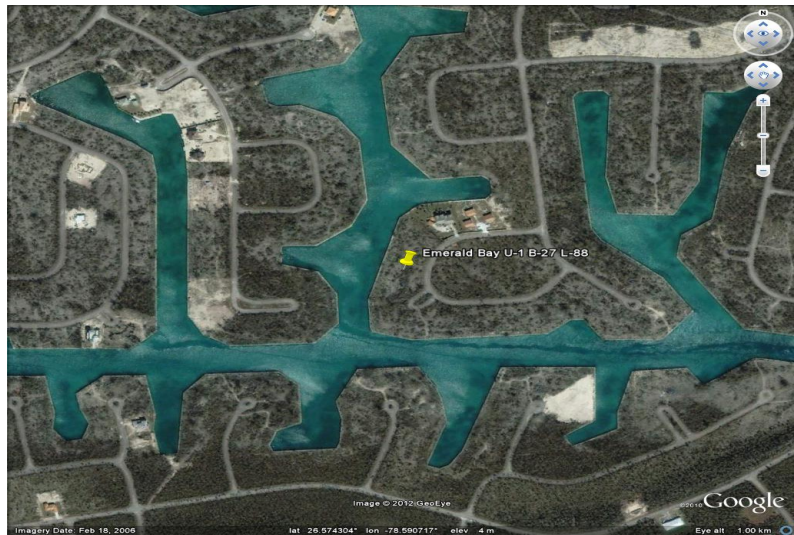
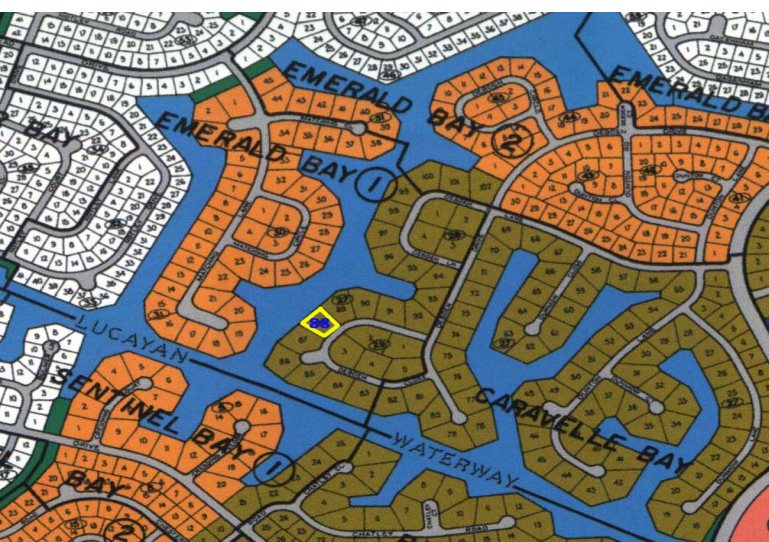


Multi-Family Highrise Lot in Emerald Bay



Waterfront Property for sale on Grand Bahama Island located in the popular Emerald Bay Subdivision. This lot is situated in Emerald Bay on Debden Close over the Casuarina Bridge. This property is very large measuring just under an acre at 35,037 square feet and boasts over 200 feet on the canal. A Boater's Dream! This property has great potential and would make a sound investment. Ideal for large multi family complex or a very large single family estate this property is A Great Buy! The area is not more than a fifteen minute drive to downtown Freeport, the Grand Bahama International airport and other amenities....read more on our website.

Lot Size: 35,037 sq ft or
0.80 Acre
Maint. Fees: Service
Charges are \$300 a year.
Subdivision: Emerald Bay
Features: Canal Front
Over 200' Water Frontage



James Sarles

Phone: (242) 351-9081
jamesarlesrealty@gmail.com



\$175,000 ID# 6933 [View Online](#)
www.sarlesrealty.com

Ph: (242) 351-9081 | Web: www.sarlesrealty.com