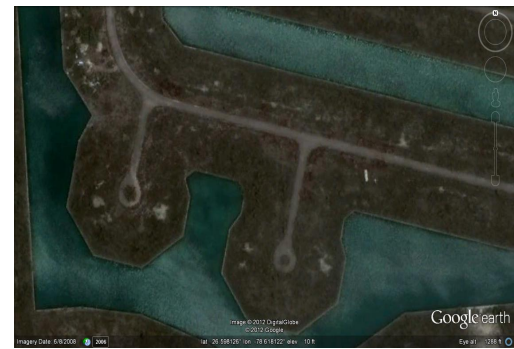
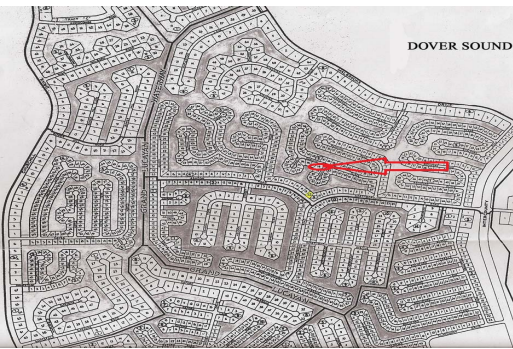
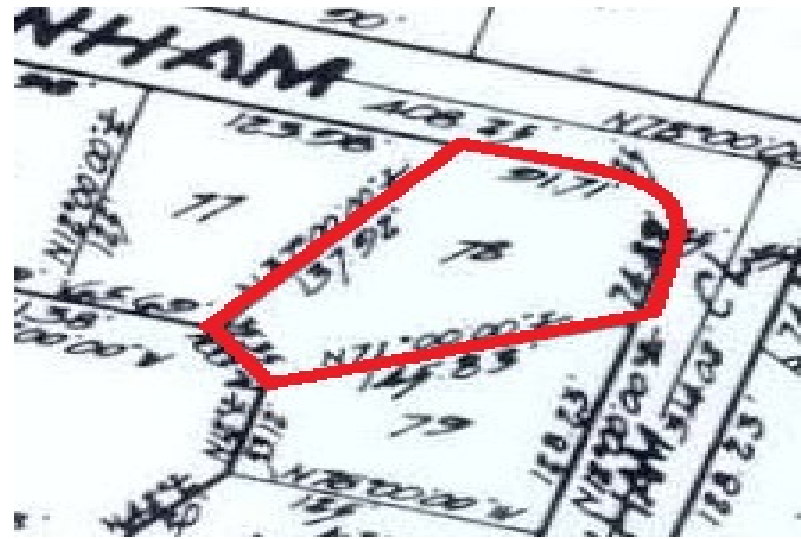
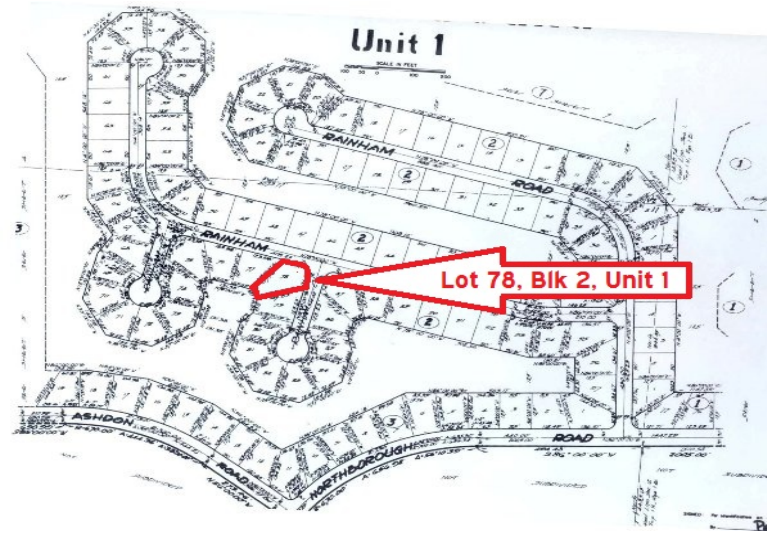


Dover Sound Canal Lot



Corner Dover Sound Lot

This Corner lot in Dover Sound has 36' on the canal and offers a water view, and low annual Service Charge fees.
...read more on our website.

Lot Size: 13,716 sq ft
Maint. Fees: \$ 130 Per Year
Subdivision: Dover Sound
Features: Canal Front
Corner Lot
Water View



Dwayne King

Phone: (242)351-9081
dwaynekingsales@gmail.com



COLDWELL BANKER
JAMES SARLES
REALTY

\$30,000 ID# 7374 View Online
www.sarlesrealty.com